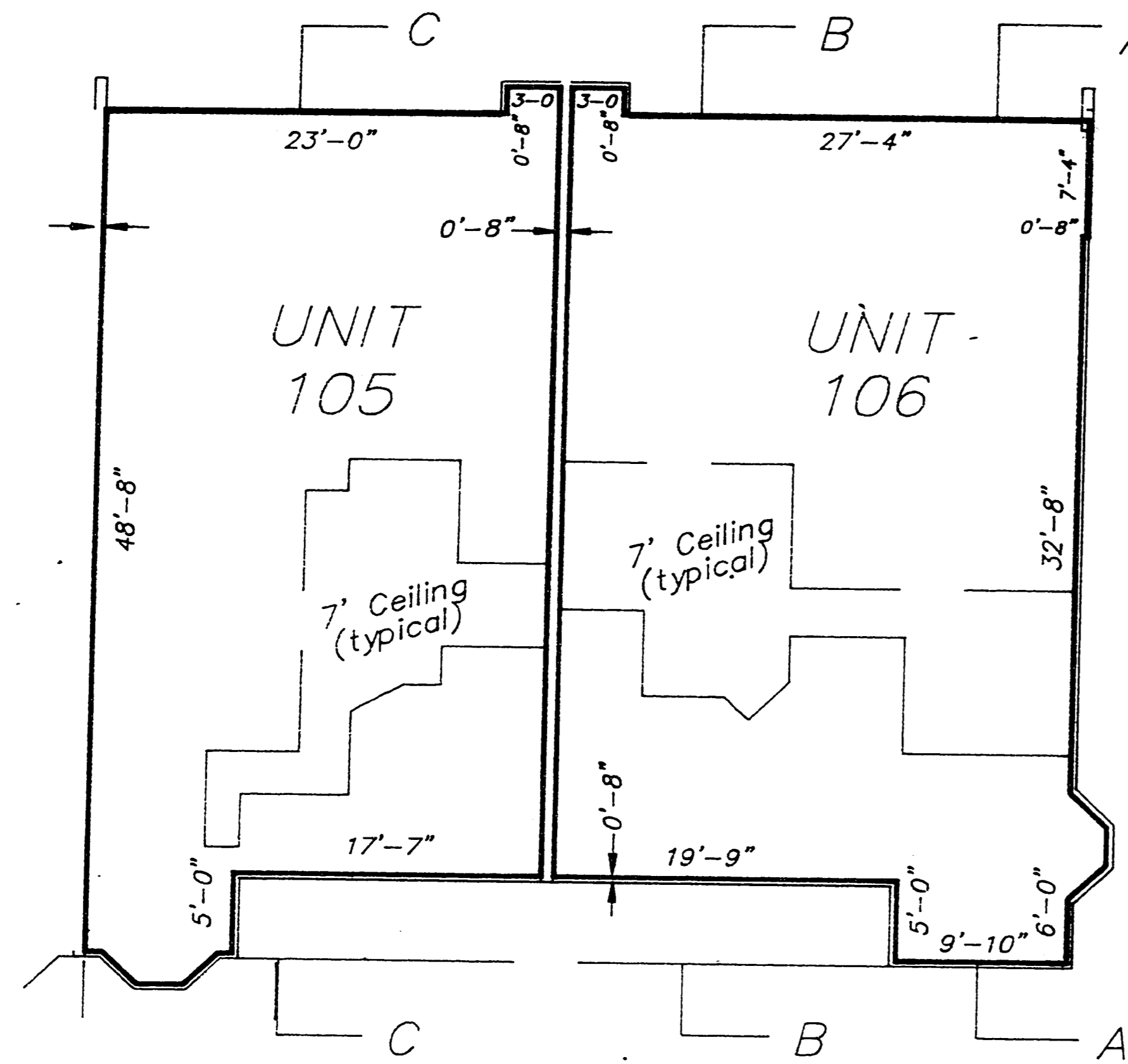
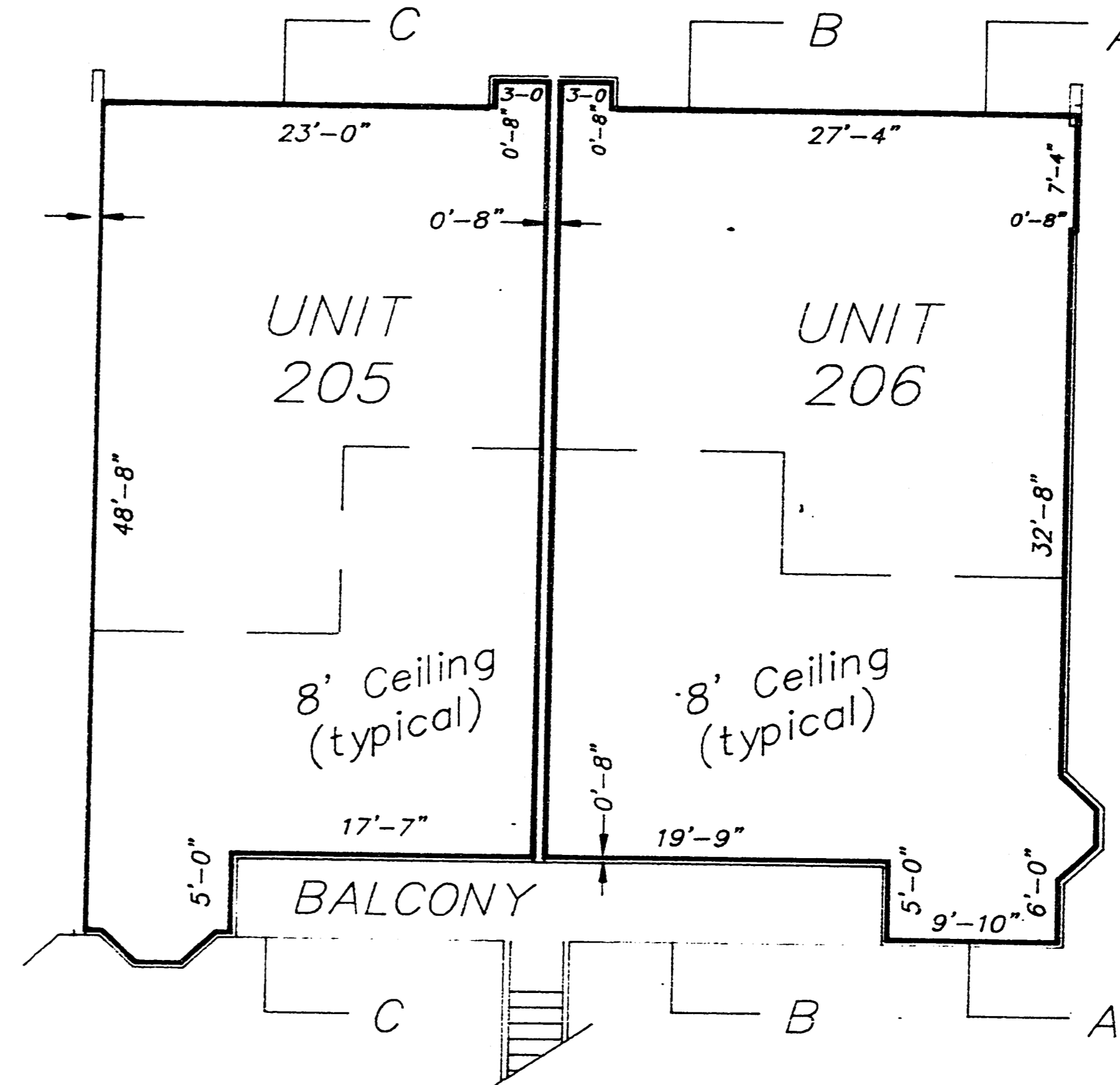
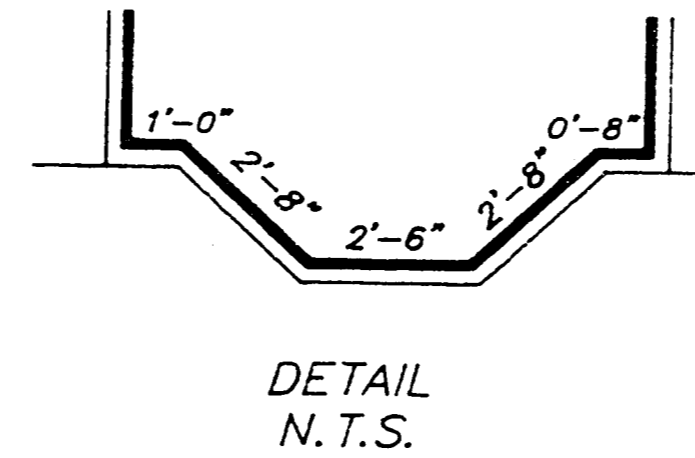


# GARDENS 1 AT WATERSIDE VILLAGE, A CONDOMINIUM

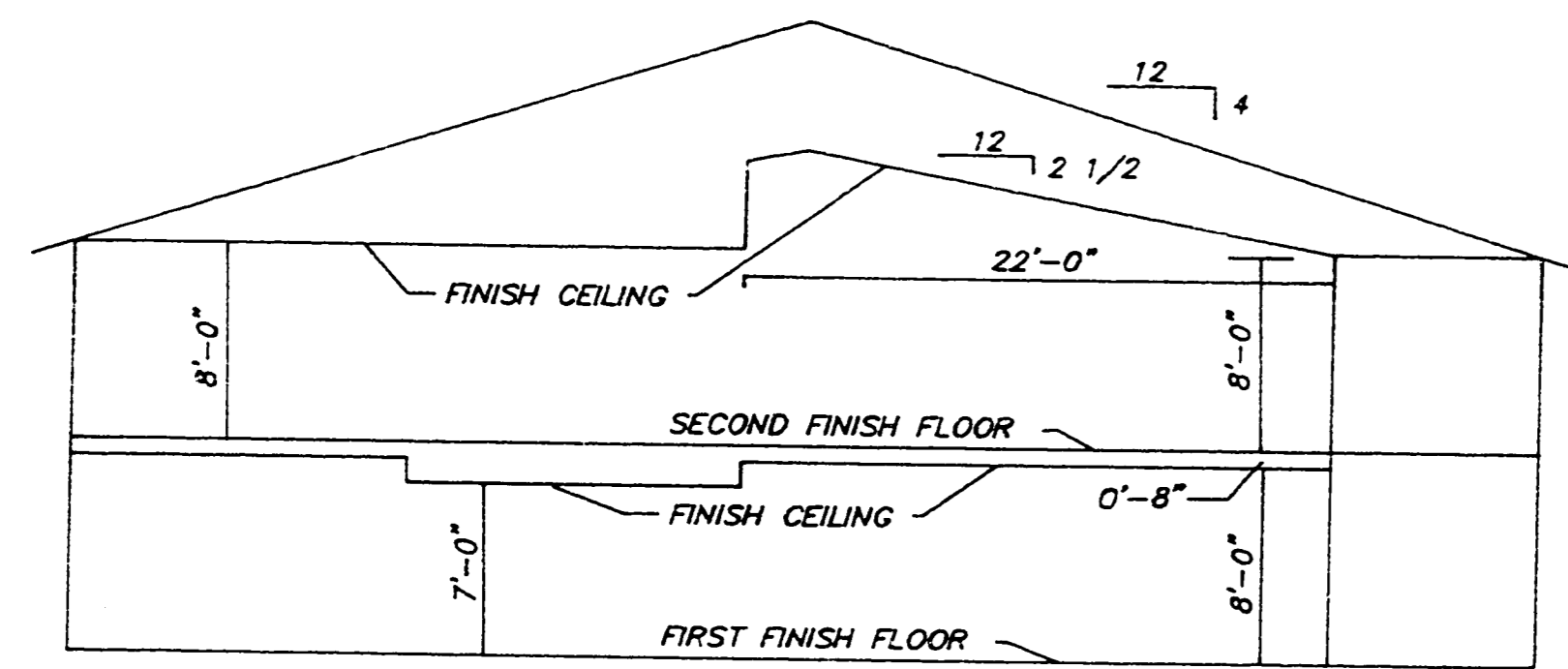
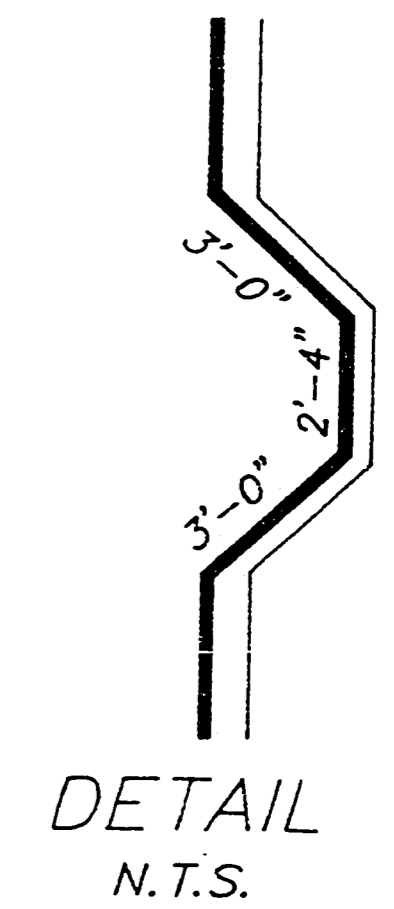
A CONDOMINIUM, LYING IN A PORTION OF SECTION 15, TOWNSHIP 39 SOUTH, RANGE 19 EAST  
SARASOTA COUNTY STATE OF FLORIDA



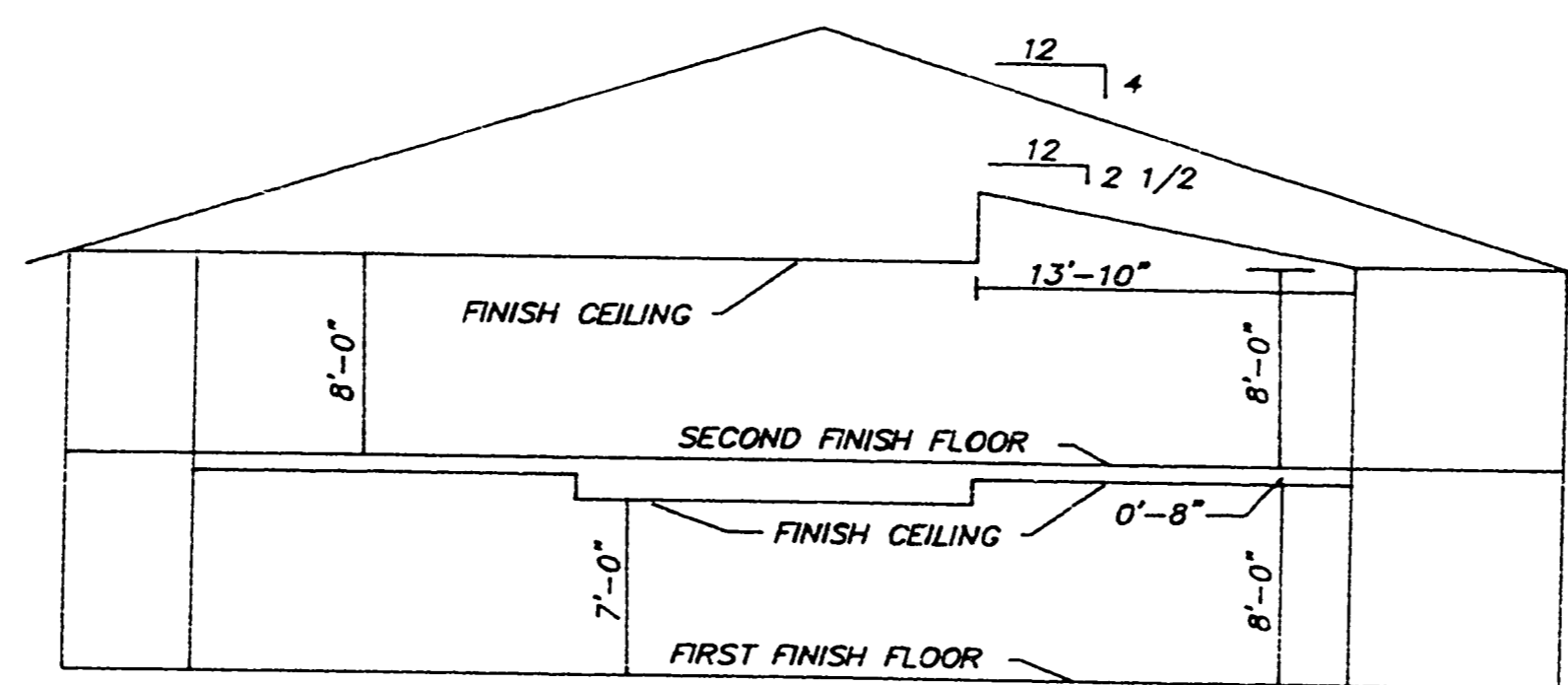
TYPICAL INTERIOR & END UNIT  
FIRST FLOOR



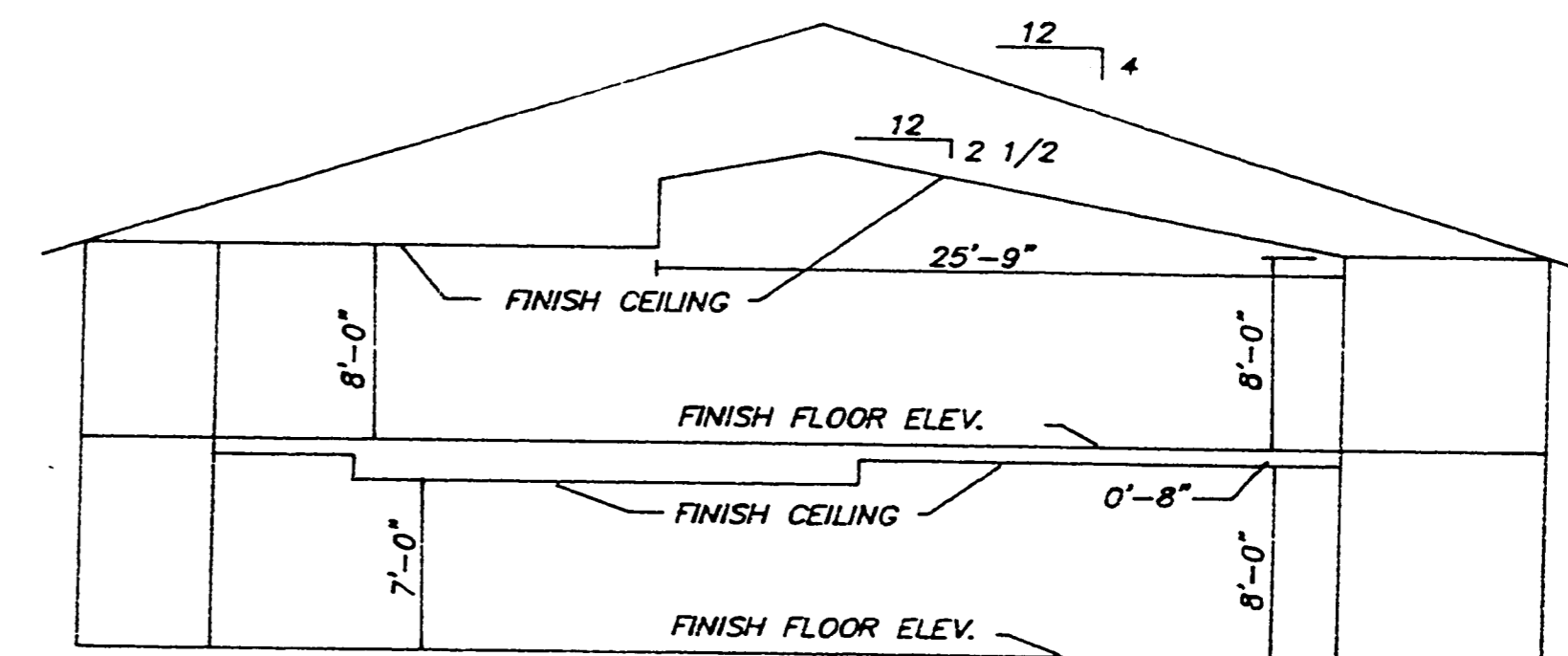
TYPICAL INTERIOR & END UNIT  
SECOND FLOOR



TYPICAL SECTION A-A



TYPICAL SECTION B-B



TYPICAL SECTION C-C

Finish First Floor Elevation of Buildings 1, 2 & 3 is  
Proposed at 17.50 feet above Mean Sea Level = 0.00



**Strayer Surveying  
& Mapping, Inc.**  
763 SHAMROCK BOULEVARD  
VENICE, FLORIDA 34293  
(941) 498-9488, FAX (941) 497-6186

## TYPICAL ELEVATIONS BUILDING 1, 2 AND 3 Scale 1" = 10'

LEGEND  
CP - CARPORT  
— UNIT BOUNDARY

NOTE: All unit dimensions shown refer to inside dimensions of the unit and are subject to slight variance which may occur during construction.

DATE: 8/31/95  
CADD: WV\GARD1E

SHEET 5 OF 6