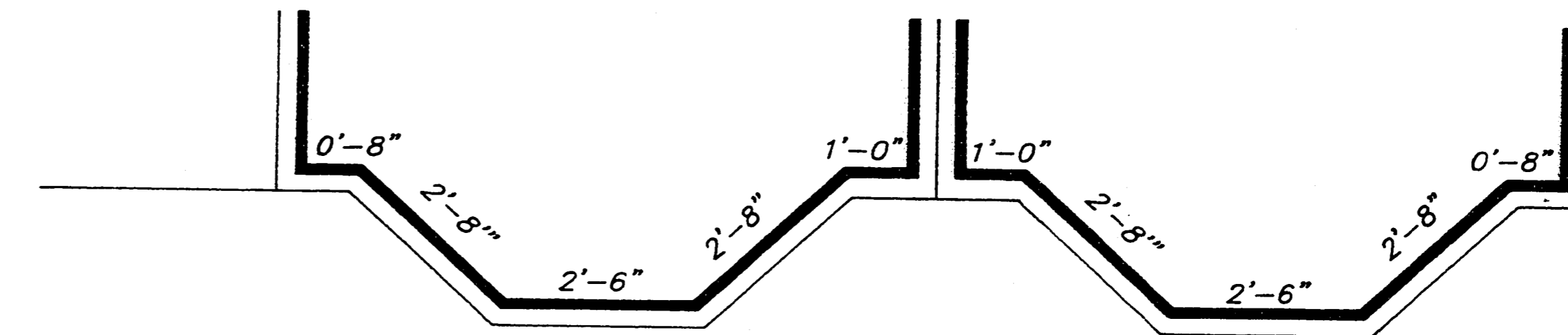


GARDENS I AT WATERSIDE VILLAGE, A CONDOMINIUM

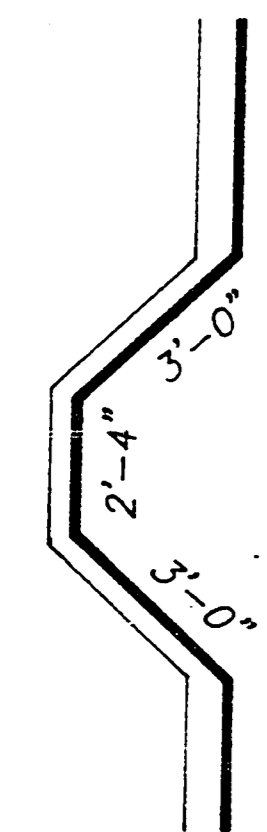
A CONDOMINIUM, LYING IN A PORTION OF SECTION 15, TOWNSHIP
39 SOUTH, RANGE 19 EAST.
SARASOTA COUNTY STATE OF FLORIDA

NOTE: All unit dimensions shown refer to inside dimensions of the unit and are subject to slight variance which may occur during construction.

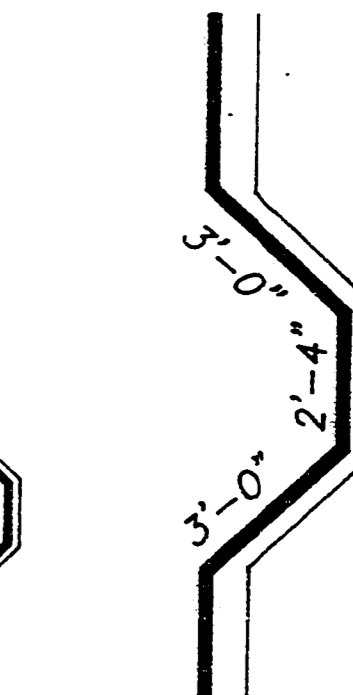
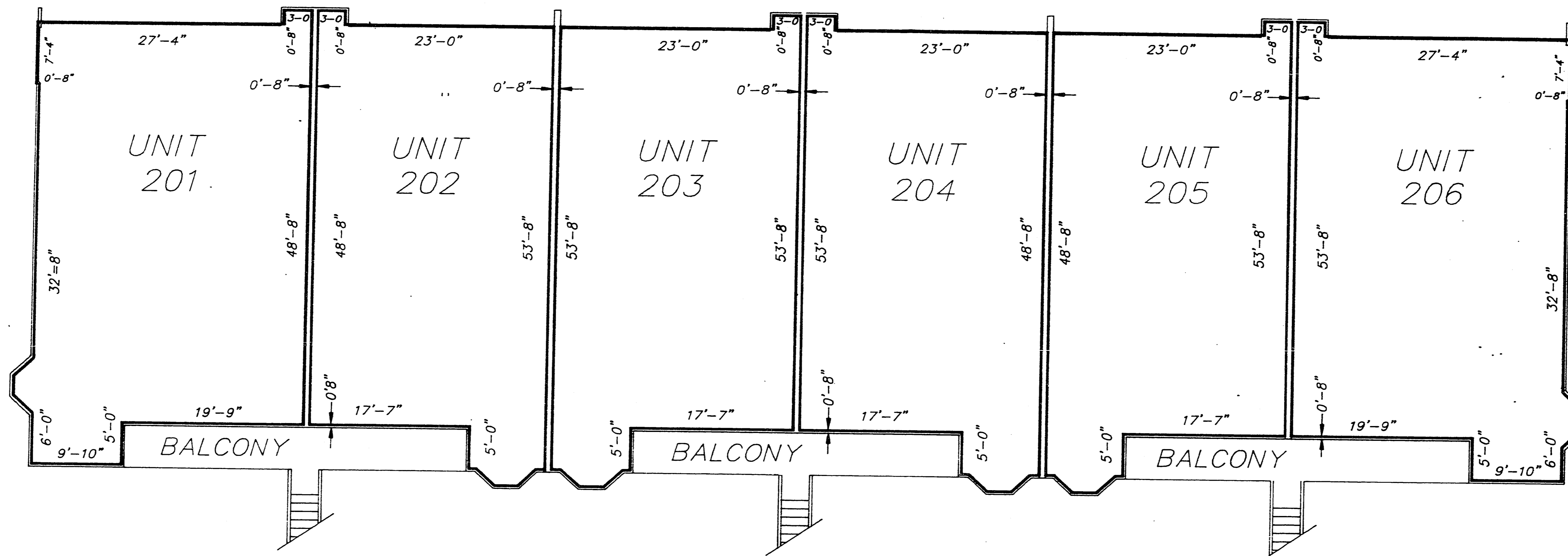
LEGEND
CP - CARPORT
— - UNIT BOUNDARY



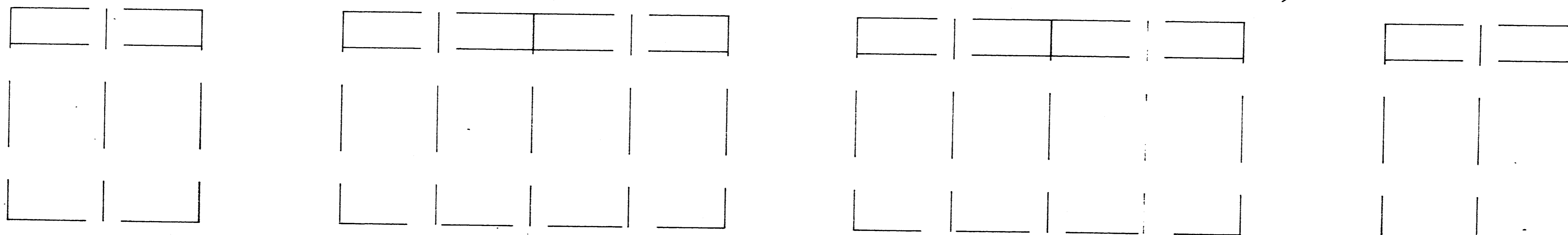
DETAIL



DETAIL



DETAIL



SECOND FLOOR PLAN BUILDING 1, 2 AND 3

Scale 1" = 10'



Strayer Surveying
& Mapping, Inc.
763 SHAMROCK BOULEVARD
VENICE, FLORIDA 34293
(941) 498-9488, FAX (941) 497-6186

DATE: 8/31/95
CADD: WV\GARD1D